

Features

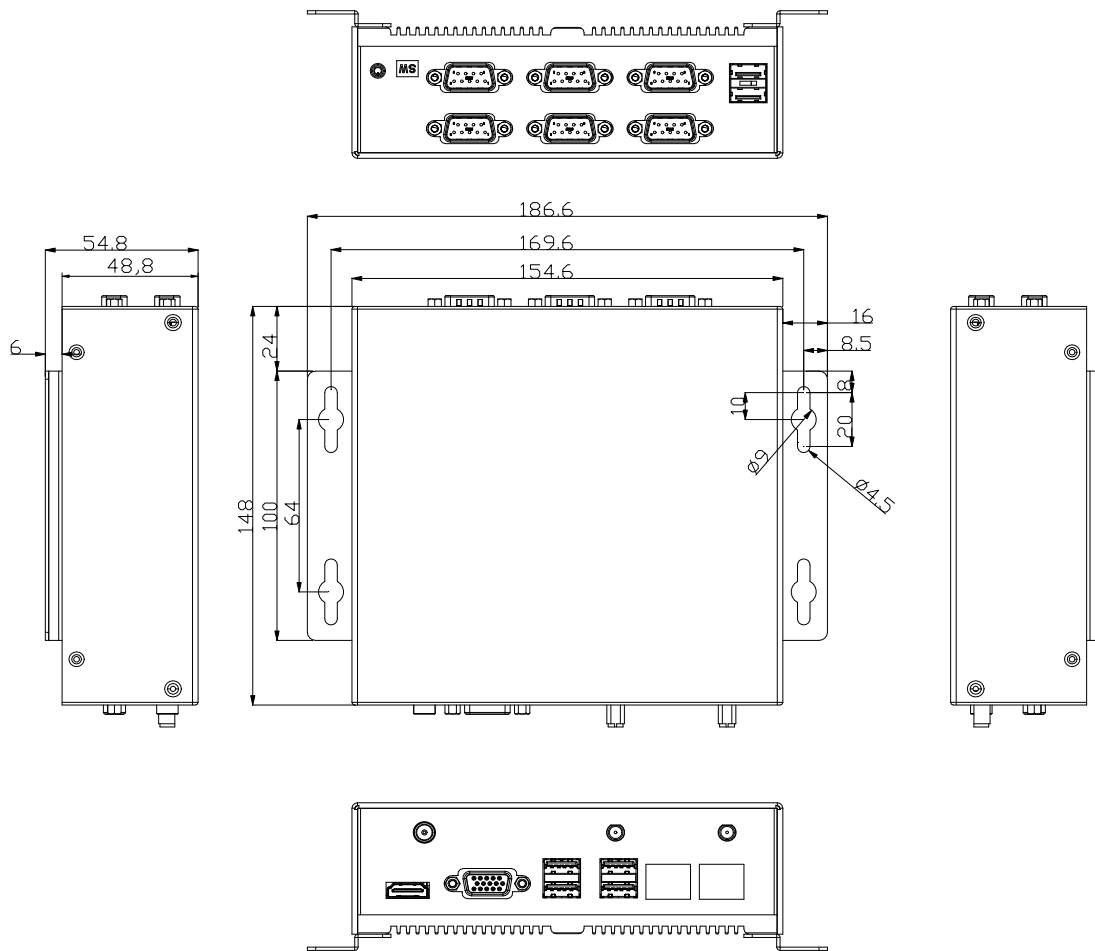
- Intel N3160 Fanless Embedded PC
- Onboard DDR3L 4GB DRAM
- Supports VGA/HDMI, Dual display
- I/O: 6COM/4USB3.0/2USB2.0
- Reserved EXT interface, supports External power switch
- Reserved dual wifi antenna, optional Mini-PCIe wireless module
- Internal modular design, built-in 1 x USB watchdog position
- Dual Intel GbE LAN
- DC12V adapter, supports DC 9-24V input
- -10°C ~70°C stable operation



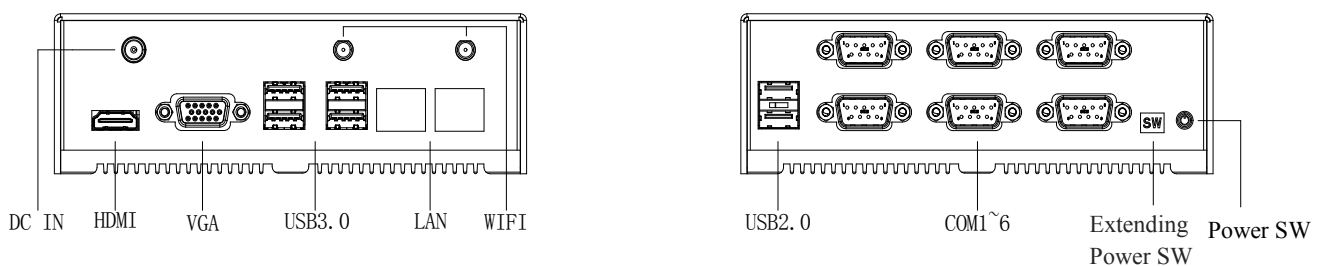
Specifications

Processor	CPU	Onboard Intel N3160 (2M Cache, up to 2.24 GHz)
	Frequency	1.6GHz
	TDP	6W
Memory	Frequency	Onboard DDR3L 1600MHz 4GB DRAM
	Capacity	4GB
Storage	SATA	/
	mSATA	1 x mSATA (Full-size, Optional)
Display	Graphics	Intel HD Graphics, share system memory up to 1.7GB
Front I/O	Button/LED	1 x Power Button(w/LED)
	Serial	6 x COM (COM1 supports RS232/422/485)
	GPIO	1 x GPIO (share with COM1)
	USB	2 x USB2.0
Rear I/O	Power In Connector	1 x DC 12V IN (supports DC9~24V IN)
	Display Port	1 x VGA ; 1 x HDMI
	EXT	1 x EXT
	LAN	2 x Intel Gigabit LAN
	USB	4 x USB3.0 (dual)
	WIFI	2 x WIFI (Optional)
Power Adaptor	Power in put	AC 100~240V/1.5A 50/60MHz
	Power out put	DC 12V/5A
Expansion	Mini PCIe	1 x Mini PCIe (Full-size)
Dimensions	W:154.6mm D:148mm H:48.8mm	
Environment	Operating temperature	-10°C ~ 70°C /10~95%, non-condensing
	Storage temperature	-20°C ~ 80°C /10~95%, non-condensing

■ Dimensions



■ I/O View



■ Ordering Information

P/N	Model	Description
186355021	UFO6355S-N	Atom 5th Gen N3160 Fanless Embedded PC , onboard 4GB DRAM, w/VGA/HDMI/2GbE /6COM/4USB3.0/2USB2.0/EXT/60W adapter